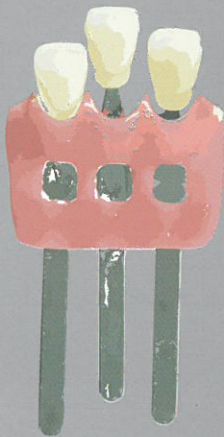


VINTAGE  
*Halo*

**GUMY®**



Verarbeitungsanleitung  
Instructions for Use  
Mode d'emploi  
Instrucciones de uso  
Istruzioni d'uso  
Gebruiksaanwijzing  
Användningsanvisningar



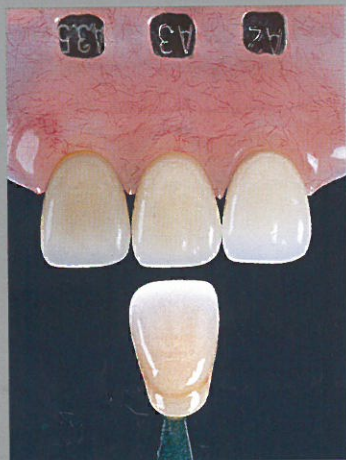
1



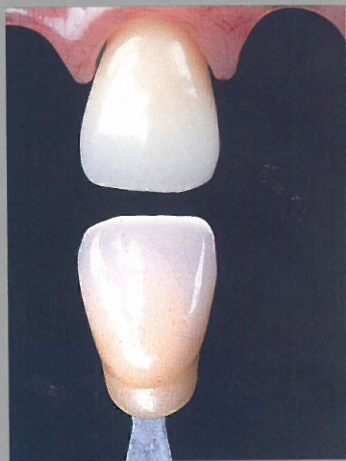
2



3



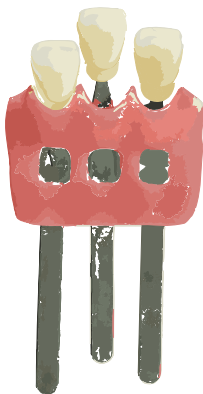
4



VINTAGE

*Halo*

**GUMY®**



**INSTRUCTIONS FOR USE**

**ENGLISH**



## INSTRUCTIONS FOR USE

Porcelain restorations are often constructed without a knowledge of the surrounding oral cavity and soft tissues of the patient. The oral cavity and especially the colour of the gingiva is particularly important when shade matching, because of the contrast between the red-violet colour of the gingiva and the tooth.

Using a conventional shade guide against the dark background of the mouth, but without a pink coloured gingival indicator can result in an inaccurate shade interpretation, as the shade guide is not representative of a vital tooth (**fig 1**). The position of red-violet colouration within the spectrum makes the perception of these colours difficult, creating the impression of only green – yellow colouration being present in a vital tooth.

Consequently inaccurate shades are selected, leading to a disappointing finished result. Often the shade guide and the restoration match, but once the restoration is fitted it appears to be lifeless and lacking in red colouration and chroma.

**VINTAGE HALO-GUMY's** offer a new approach to shade selection. These gingiva coloured shade indicators are available in three shades of pink, light, medium and dark. GUMY is designed to be used in conjunction with a conventional shade guide, to neutralise the colour saturation of the gingiva. Three shade tabs can be placed in each GUMY gingival indicator.

GUMY® can also be used in the following ways:

## **SHADE SELECTION IN THE SURGERY**

Select the GUMY which best matches the patients gingival shades. Using a conventional shade guide, select the shade as normal, then place one or more of the chosen shades into the GUMY and check the shade again **(fig. 2)**. You will notice that A group shades in the VITA\* colour system, appear to lose chroma and are slightly yellow, instead of appearing reddish-brown as before. A more intensive tooth colour or a RED SHIFT shade is selected and colour matched again in the GUMY, to ascertain the correct shade.

This reaction is very noticeable when the patient has a light gingiva.

## **GUMY® AS A CONTROLLING INSTRUMENTS IN THE LABORATORY**

The GUMY gingival indicator can be used in several ways in the laboratory.

1. When a shade has been selected without a GUMY, place the chosen shade tab into the GUMY and compare to a second tab of the same shade **(fig. 3)**. If the shades differ, select a higher chroma or RED SHIFT shade. When constructing the restoration, select the shade placed in the GUMY.

\* „VITA“ is the registered trademark of VITA-Zahnfabrik, Bad Säckingen.

2. When the colour of the tooth has been determined with the GUMY, place the chosen shade tab in the GUMY and check the shade with a second tab of the same colour, to observe the difference in shade (**fig. 4**). The finished restoration can be easily checked with either a shade tab without a GUMY or using a GUMY with both the shade tab and the restoration.

## NOTES

- Place the shade tab into the GUMY® so that the cervical area of the tab is not visible.
- We suggest that several shade tabs are used in one GUMY®
- Do not use GUMY® when checking work on a model.
- Do not sterilise with alcohol or similar liquids.

## COLOURS

- GUMY®- L (Light)
- GUMY®- M (Medium)
- GUMY®- D (DARK)

Ordering information:

1 Set with 3 GUMY's-L,M,D      Order-No. 7040