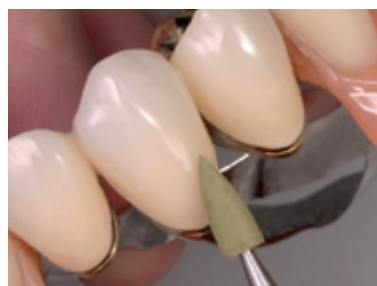


CompoMaster Coarse ■ CompoMaster



For composite

The silicone polishers are integrated with a carefully balanced blend of diamond particles. They are durable and designed for a quick finishing and polishing of composite restorations to provide a uniform and smooth surface.



The combination of the different grits of CompoMaster Coarse and the finer CompoMaster polishers (with yellow and white banded shank) is an efficient concept for homogeneous surface treatment.



Polishers:

Min⁻¹ Recom. 5,000- 15,000 / Max. 20,000 / CP 0.5 N



Unmounted wheel:

Min⁻¹ Recom. 5,000- 10,000 / Max. 15,000 / CP 0.5 N

Indications

- CompoMaster Coarse polishers have been designed for contouring and prepolishing composite surfaces in one step.
- CompoMaster instruments subsequently polish the restorations.

info

When using the CeraMaster/-Coarse and CompoMaster/-Coarse polishers intraorally, operate each polisher under dry conditions with intermittent strokes and supply compressed air to avoid overheating of the composite and to protect the pulp.

PN	Quantity	Product
INDIVIDUAL ARTICLES		
111C-114C, 116C-119C	3 pcs.	CompoMaster Coarse, HP and CA shank
131C	1 pc.	CompoMaster Coarse, unmounted wheel + HP mandrel
0111-0114, 0116-0119	3 pcs.	CompoMaster, HP and CA shank
ASSORTMENTS		
120C	1 box	CompoMaster Coarse, HP shank, 1 each bullet, minipoint, KN7, WH6
115C	1 box	CompoMaster Coarse, CA shank, 1 each bullet, knife, cup, minipoint
0120	1 box	CompoMaster, HP shank, 1 each bullet, minipoint, KN7, WH6
0115	1 box	CompoMaster, CA shank, 1 each bullet, knife, cup, minipoint



	Shape	Bullet	Knife	Cup	Minipoint	KN7	WH6	Unmounted wheel
	ISO No.	040	090	065	030	125	120	220
CompoMaster Coarse	HP	116C			119C	117C	118C	131C
	CA	111C	112C	113C	114C			
CompoMaster	HP	0116			0119	0117	0118	
	CA	0111	0112	0113	0114			