



High-strength lithium disilicate
glass ceramic with new HDIL technology



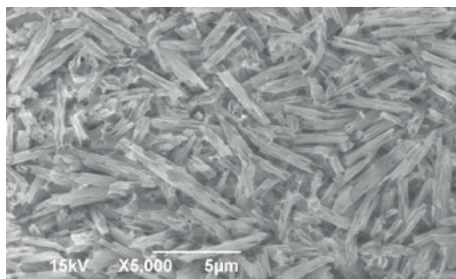
VINTAGE PRIME PRESS

With new HDIL formula for efficient use in staining, cut-back and layering techniques

Vintage Prime Press is the new high-strength lithium disilicate glass ceramic for the production of outstandingly aesthetic crowns, inlays, onlays, veneers and 3-unit anterior bridges. A new process (HDIL formula = High-Density Interlocking), creating an interlocked crystal structure in the glass matrix, gives Vintage Prime Press excellent strength values of up to 525 MPa. This structure counteracts crack propagation and improves chipping resistance



Table top restoration (tooth 36), individualised with Vintage Art Universal porcelain stains



The interlocked crystal structure increases material strength and reduces chipping effects

HIGHLIGHTS

- High-strength lithium disilicate glass ceramic with biaxial flexural strength of **up to 525 MPa**
- Reliable shade stability even after multiple firing
- High accuracy of fit, as there is almost no reaction layer after pressing
- Abrasion resistance and antagonist friendliness
- 4 different translucencies for every restorative challenge
- Combinability with Vintage LD layered porcelains and Vintage Art Universal stains

43 shades – 4 translucencies

Vintage Prime Press offers the right shades and translucencies for all types of metal-free restorations, allowing you to create individualised and natural aesthetic results.

- E (Enamel)
high, enamel-like light transmission
- HT (High Translucency)
moderate translucency for crowns and bridges
- LT (Low Translucency)
low translucency for slightly discoloured preparations
- HO (High Opacity)
high opacity for masking abutments and frameworks

E (Enamel)

E-1	E-2	E-BL3	E-BL4	E-A1	E-A2

HT (High Translucency)

HT-BL3	HT-BL4	HT-A1	HT-A2	HT-A3	HT-A3.5	HT-A4

HT-B1	HT-B2	HT-B3	HT-B4	HT-C1	HT-C2	HT-C3	HT-C4	HT-D2	HT-D3	HT-D4

LT (Low Translucency)

LT-BL3	LT-BL4	LT-A1	LT-A2	LT-A3	LT-A3.5	LT-A4

LT-B1	LT-B2	LT-B3	LT-B4	LT-C1	LT-C2	LT-C3	LT-C4	LT-D2	LT-D3	LT-D4

HO (High Opacity)

HO-1



Order information



Vintage Prime Press

Trial Kit

5 ingots, 3 g each in the shades HT-BL4, HT-A1, HT-A2, LT-A1 and LT-A2

PN P0870



Pellets

5 ingots, 3 g each
(available in 43 shades)

Specifications

Property	Value
Biaxial flexural strength	525 MPa
Vickers hardness	513 HV
Chemical solubility	12 µg/cm ²
Linear thermal expansion CTE (25-500 °C)	10.8 x 10 ⁻⁶ K ⁻¹
Glass transition temperature	504 °C
Pressing temperature	905-935 °C
Density	2.4 g/cm ³

in accordance with ISO 6872:2015/AMD 1:2018 "Dentistry-Ceramic materials"



SHOFU INC. 11 Kamitakamatsu-cho, Fukuine, Higashiyama-ku, Kyoto 605-0983, Japan
EC REP SHOFU DENTAL GmbH An der Pönt 70, 40885 Ratingen, Germany, www.shofu.de
SHOFU is a registered trademark of SHOFU INC. All other trademarks and registered trademarks are the property of their respective holders.
SHOFU INC. reserves the right to change specifications without notice.